

GeoVision Mobile Phone Guide

It is possible to view your GeoVision via your mobile phone using GPRS, 3G and WiFi.

There are a number of options using the built in webcam server of GeoVision:

1. 3GPP Video Streaming
2. Mobile
3. JPEG/GIF

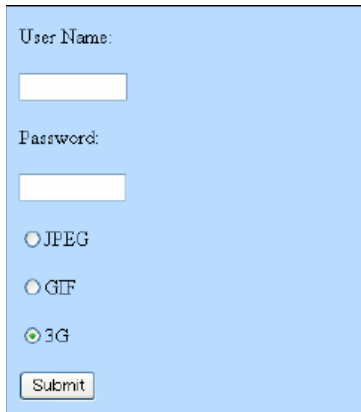
The 3 options provide either streaming video or refreshing images. Which option you use will depend on your make/model of mobile phone. Below are some examples:

3GPP Video Streaming

To use the 3GPP streaming video you will need a mobile phone with a video player that supports RTSP (Real Time Streaming Protocol)

Open the Internet browser on your phone and enter the external IP address of your GeoVision system (e.g. 81.82.83.84).

You will then have the option of '3G'.



Selecting this will give you access to live streaming video and video playback.

Mobile Video Streaming

To use this option you will need to install one of three specialist phone applications; SSVIEW, MSVIEW or GVIEW. Software is firstly installed on your PC and you simply copy installation files / continue the installation on your phone.

SSVIEW V2 is designed for mobile phones that run on Java MIDP 2.0 or later (Symbian OS edition 7.0).

SSView V3 is designed for mobile phones with Symbian Nokia S60 2nd and 3rd edition operating systems (for example the Nokia N82 / N95).

MSView V2 is designed for mobile phones with Windows Mobile 5 and 2003 for smartphone operating systems.

MSView V3 is designed for mobile phones with Windows Mobile 6 Standard and Professional operating system.

GView V2 (also referred to as PDA View) is designed for PDA's and mobile phones that run on Windows Mobile 5.0, 2003 for pocket pc and Windows Mobile 6 Classic / Professional operating systems (for example O2 XDA Orbit 2)

JPEG/GIF

If your phone does not support any of the above operating systems then you may be able to simply view refreshing images by using your Internet browser as detailed in the 3GPP streaming guide above (but selecting 'JPEG' or 'GIF' instead of '3G'.

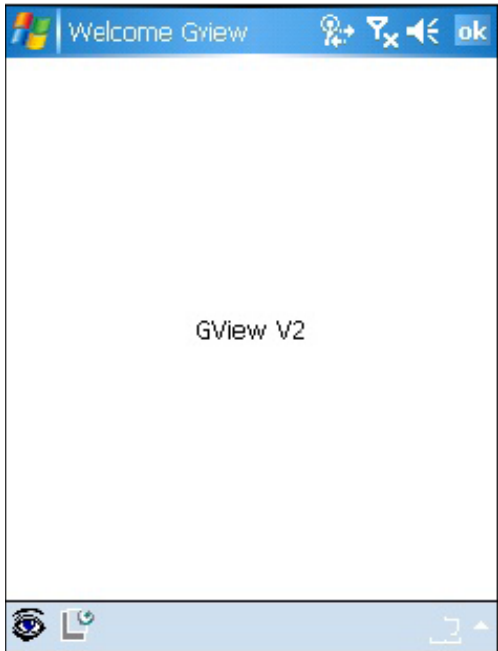
Comparison Table

	3GPP	SSView V2	SSView V3	MSView V2	MSView V3	GView V2
OS Supported	Phones Supporting RTSP (Real Time Streaming Protocol)	Java MIDP 2.0 or later Symbian OS 7.0	Nokia S60 2 nd and 3 rd Edition	Windows Mobile 5 and 2003 for smartphone	Windows Mobile 6 Standard and Professional	Windows Mobile 5.0, 6 Classic / Professional and 2003 for pocket pc
Port	TCP 8554 UDP 17300-17380	Data Port 8866 RPB Port 5511	Data Port 8866 RPB Port 5511	Data Port 8866 RPB Port 5511	Data Port 8866 RPB Port 5511	Data Port 8866 RPB Port 5511
Protocol	TCP/IP (Steaming)	TCP/IP (JPEG)	TCP/IP (Steaming)	TCP/IP (Steaming)	TCP/IP (Steaming)	TCP/IP (Steaming)
Functions	Video Streaming, Remote Playback Audio and more	PTZ Control, Output Control and more	Video Streaming PTZ / IO Control and more	Video Streaming Remote Playback GV-Video Server Support PTZ / IO Control	Video Streaming Remote Playback GV-Video Server Support PTZ / IO Control	Video Streaming Remote Playback GV-Video Server Support PTZ / IO Control
Example	HTC Tytn II	Nokia N73	Nokia E60 / N82 / N95	HTC Touch Flo / HTC Tytn II	HTC Touch Flo / HTC Tytn II	O2 XDA Orbit 2 (HTC Touch Cruise)

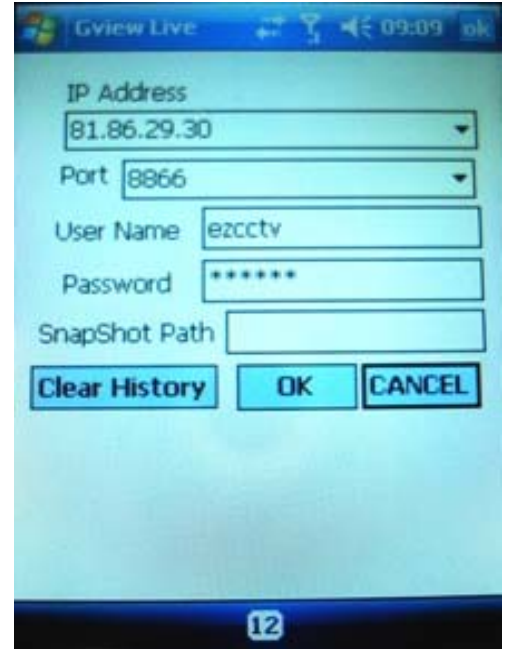
Note: All phone viewing applications are controlled via the Webcam Server option

Example Connection (GView V2)

Below is an example of connecting to a GeoVision system using the GView V2 software.



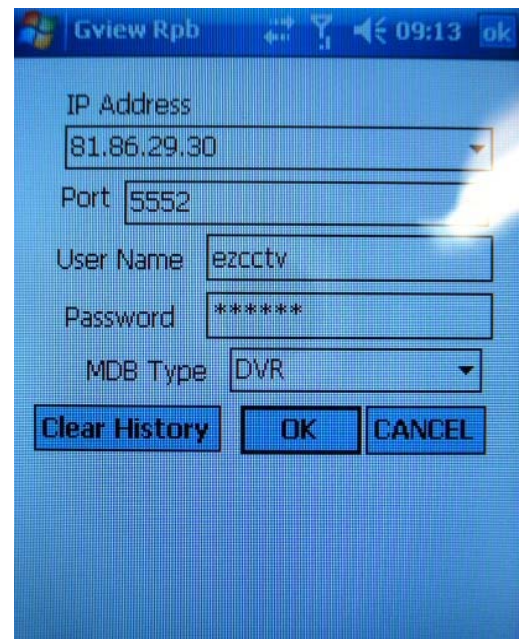
GView Main Screen



GView Live Login



GView Live View
1, 4, 9, 16 Screen Views
PTZ / IO Control



GView Remote Playback