

Introduction

The GeoVision Key Lock Utility is a feature of GeoVision to avoid accidental and deliberate misuse of the system.

Below is the Key Lock Screen in use. The Windows START button and menu are replaced with the Key Lock Interface.



There are 5 icons along the bottom of the screen.



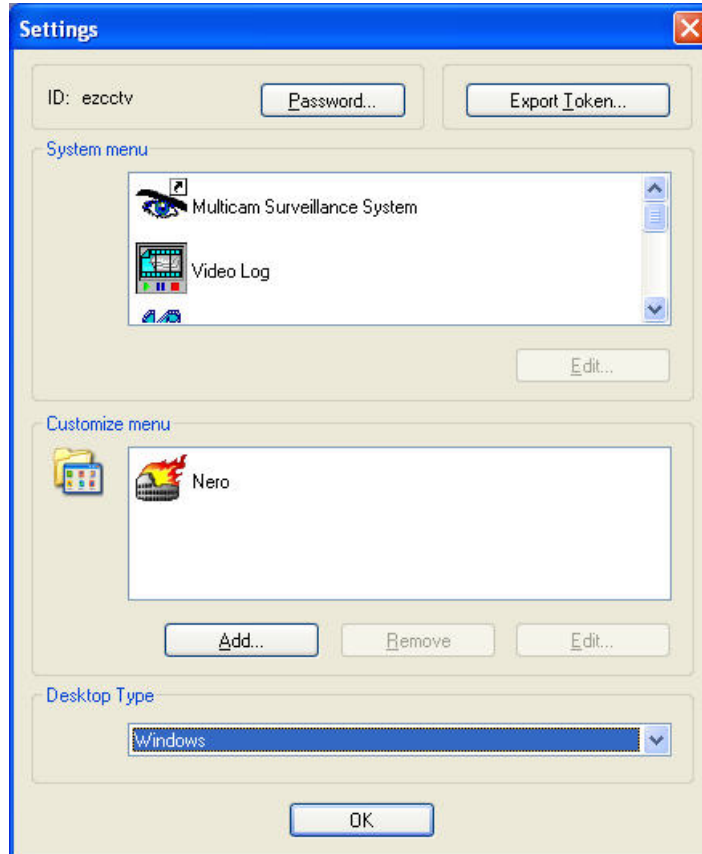
- 1 Applications**
From this icon you can launch all GeoVision and user specified applications
- 2 Settings**
From here you can disable Key Lock & add programs to the Application List
- 3 Logout**
From this icon you can logout of the GeoVision system
- 4 Shut Down**
From this icon you can shut down the GeoVision system
- 5 Task Manager**
From here you can view all open applications and switch between them

Disabling Key Lock Utility

You may want to disable the Key Lock Utility to access the Windows Desktop Interface, for network configuration etc.

To Disable the Key Lock Utility please follow these instructions:

1. **Click on the Settings Icon**
2. **Enter Supervisor ID and Password, Click OK**
3. **Change Desktop Type to Windows from Multicam**



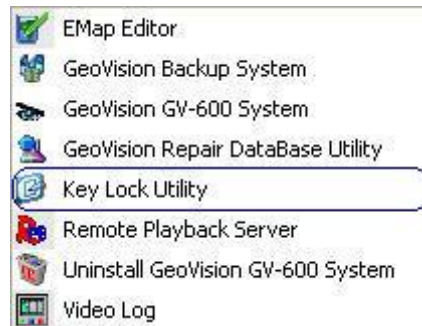
4. **Click on OK**
5. **Click on the Logout icon**
6. **Enter Supervisor ID and Password, Click OK**
7. **Logon to Windows with your Windows Username and Password**
8. **The Key Lock Utility is now disabled.**



Starting the Key Lock Utility

Follow the instructions below to start the Key Lock Utility

1. Go to **START>Programs>GVxxx>Key Lock Utility**



2. **Click on the Settings icon**
3. **Enter Supervisor ID and Password, Click OK**
4. Make sure **Desktop Type** is set to **Multicam**
5. **Click OK**

