

EZ Full Tower GeoVision NVR Up to 8TB Built In Storage



The EZ-Full Tower system is a pure NVR (Network Video Recorder) designed exclusively for IP Camera surveillance. This NVR System can support up to 16 MegaPixel IP Cameras from a over 600 models.

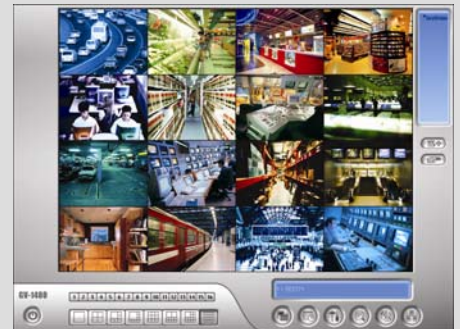
The EZ Full Tower has a dedicated operating system drive for enhanced reliability is small enough to fit under any desk or cupboard but powerful enough to hold up to 8TB of storage for demanding Digital CCTV Surveillance.

Ideal for businesses and residential applications, the EZ-Full Tower solution offers amazing digital surveillance performance whilst remaining quiet enough for any environment. The system also comes with dedicated operating system drive installed for enhanced performance and reliability.

The EZ Full Tower is a NVR with very advanced features including 3G Remote View, Privacy Masking, MPEG-4 / H.264 Compression, Automatic Resume Record, Multi Protocol PTZ, I/O Integration and Hybrid Analogue and IP Camera Integration.

Features

- IDEAL FOR ANY BUSINESS
- FITS UNDER DESK
- SUPPORTS UP TO 16 MEGAPIXEL IP CAMERAS
- VGA OUTPUT
- TV SPOT OUT AVAILABLE
- BUILT IN DVD/RW
- BUILT IN LAN CONNECTION
- FRONT MOUNTED USB2 PORTS



Live Monitoring



Playback



Remote View

EZ Full Tower System

Full Tower GeoVision DVR

Up to 8TB Built In Storage



The EZ Full Tower NVR Range

EZ FullTower NVR-8

Supports up to 8 MegaPixel IP Cameras.

EZ FullTower NVR-16

Supports up to 16 MegaPixel IP Cameras.

IP Camera Support

This NVR system supports over 600 models of IP camera from leading IP Camera manufacturers including:

ACTi, AXIS, Arecont, Bosch, Canon, GeoVision, HikVision, IQEye, JVC, Mobotix, Panasonic, Pelco, Sanyo, Sony, Verint and Vivotek.

Custom Built Surveillance

All ezCCTV surveillance systems are custom built to your requirements. ezCCTV use only the highest quality components and can build to your specifications. We can even apply your company's logos to the system as well any other advanced settings you may require prior to installation.

All of our surveillance systems are fully soak tested for at least 72 hours and undergo a series of over 200 rigorous checks before shipping. All systems are also backed by our ezVision 3 Year warranty.

Software Features

- 24/7 RAID EDITION HARD DRIVES
- HYBRID ANALOGUE/IP CAMERA SUPPORT
- STATE OF THE ART VIDEO ANALYTICS
- ADVANCED IE/3G REMOTE VIEW
- PLUG AND PLAY ROUTER SETUP
- BACKUP TO CD/DVD/USB
- EPOS/ANPR/ACCESS CONTROL INTEGRATION
- SUPPORT FOR OVER 40 PTZ PROTOCOLS
- HYBRID ANALOGUE IP SOLUTION
- REMOTE MONITORING
- UP TO 256 CAMERA MONITORING (WITH CCS)

Specification

Model	EZ-FULLTOWER-SYSTEM
Frame Rate	25/50/100/200/400/ 800 FPS (with two GV Cards)
Video Ports	4 to 32 (with two GV Cards) Up to 16 MegaPixel IP Cameras (NVR Version)
Audio Ports	Up to 32 (with two GV Cards)
Display	VGA/DVI output – TV Output optional
Backup	CD / DVD / USB
Storage	Built in OS drive Up to 8TB Available
Connection	4 to 32 BNC (with two GV Cards)

