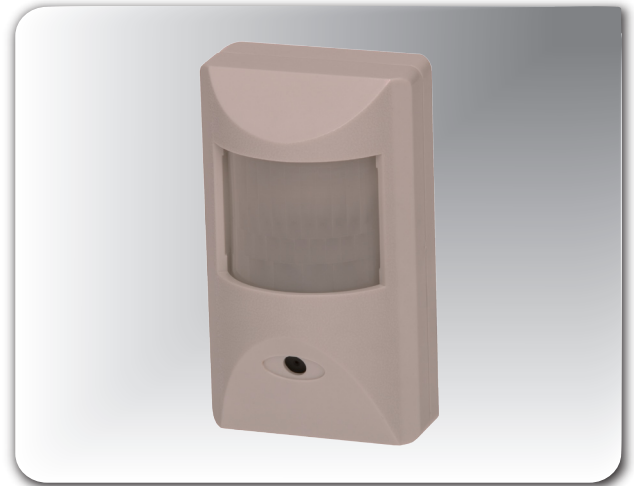


## Colour Covert PIR Camera

### FEATURES

- 1/3" Colour PIR Style Camera with SHARP CCD.
- High Resolution 470 TVL
- Digital Signal Processor (DSP) chip-set for image control.
- High Sensitivity, low smear, high anti-blooming, and high S/N ratio.
- Powerful functions: (AES), (AGC), (AWB)



EZ-611-PIR

380 TVL

0.2 Lux

Pinhole

### SPECIFICATION

Model	EZ-611-PIR
Image Sensor	1/3" SHARP HAD CCD
Pixel Array	PAL: 500(H) x 582(W)
Horizontal Resolution	380 TVL
Minimum Illumination	0.2 LUX F2.0
S/N Ratio	Better than 48dB
Backlight Compensation	Yes
White Balance	Auto
Auto Gain Control	Auto
Lens Mount	Pinhole Lens 3.7mm
Power Source	DC 12V
Power Consumption	100mA
Operating Temperature	-10 Degrees C to +50 Degrees C
IP Rating	-
Dimension	70 (W) x 120 (H) x 48 (L) mm
Weight	226g

\*Specification and image are subject to change without any notification